

Client



Source



Rosemary (*Rosmarinus officinalis*)  
NF-RSMI-19-A

Sample

Rosemary (*Rosmarinus officinalis*)  
Batch #:..... NF-RSMI-19-A  
Type:..... Essential Oil  
CAS Number:... 8000-25-7  
**Nature's Fusions**

Client



Website

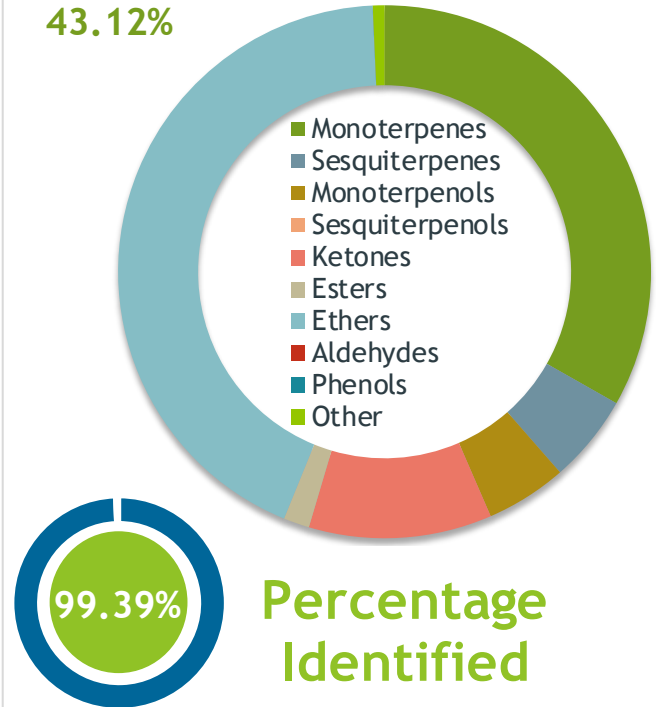


Primary

**42.94%** | 1,8-Cineole (Co-Eluting)  
**11.40%** | alpha-Pinene  
**11.09%** | Camphor

Ethers

43.12%



Percentage Identified

Result



Conclusion

No adulterants, diluents, or contaminants were detected via this method. This oil meets the expected profile for genuine essential oil of Rosemary (*Rosmarinus officinalis*)

Internal Number: | EVS-2865



**Essential Validation Services**

747 SW 2nd Ave IMB 12 Suite 306  
Gainesville, FL 32601

317.361.5044 |  
<https://essentialvalidationservices.com/>  
adam@essentialvalidationservices.com

*Adam Christen*

Monoterpenes	33.21%	33.21%
Sesquiterpenes	5.35%	5.35%
Monoterpenols	4.92%	4.92%
Sesquiterpenols	0.00%	0.00%
Ketones	11.11%	11.11%
Esters	1.57%	1.57%
Ethers	43.12%	43.12%
Aldehydes	0.00%	0.00%
Phenols	0.01%	0.01%
Other	0.71%	0.71%

Client


**Nature's FUSIONS**  
 ESSENTIAL OILS

Source



*Rosemary (Rosmarinus officinalis)*  
 NF-RSMI-19-A

Total Percentage		99.39%			
Number	RT	Area %	Compound Name	RI	Chemical Family
1	6.54	0.01%	Toluene	765.00	Simple Phenolic
2	10.70	0.03%	Cyclofenchene	890.00	Monoterpene
3	10.86	0.02%	Santene	884.00	Normonoterpene
4	11.47	0.01%	Bornylene	902.50	Monoterpene
5	11.67	0.02%	Xi-Fenchene	910.50	Monoterpene
6	12.23	0.01%	Hashishene	922.00	Monoterpene
7	12.36	0.88%	Tricyclene	923.00	Monoterpene
8	12.60	0.19%	alpha-Thujene	927.80	Monoterpene
9	12.88	11.40%	alpha-Pinene	936.10	Monoterpene
10	13.05	0.03%	alpha-Fenchene	946.00	Monoterpene
11	13.49	6.72%	Camphene	950.30	Monoterpene
12	14.55	0.06%	Sabinene	973.00	Monoterpene
13	14.68	9.29%	beta-Pinene	974.00	Monoterpene
14	14.81	0.08%	1-Octen-3-ol	980.00	Aliphatic Alcohol
15	15.08	0.02%	Octan-3-one	981.00	Aliphatic Ketone
16	15.27	0.90%	Myrcene	989.20	Monoterpene
17	15.83	0.22%	alpha-Phellandrene	1002.00	Monoterpene
18	16.08	0.45%	delta-3-Carene	1008.00	Monoterpene
19	16.35	0.20%	alpha-Terpinene	1014.00	Monoterpene
20	16.69	1.81%	para-Cymene	1024.30	Monoterpene
21	17.06	42.94%	1,8-Cineole	1031.80	Monoterpene Ether
22	17.07	Co-Eluting	Limonene	1029.50	Monoterpene
23	17.22	0.08%	(Z)-beta-Ocimene	1037.80	Monoterpene
24	17.65	0.03%	(E)-beta-Ocimene	1047.70	Monoterpene
25	18.11	0.66%	gamma-Terpinene	1054.00	Monoterpene
26	18.46	0.04%	trans-Sabinene hydrate	1072.00	Monoterpenol
27	19.33	0.22%	Terpinolene	1092.10	Monoterpene
28	19.74	1.07%	Linalool	1099.00	Monoterpenol
29	20.37	0.03%	endo-Fenchol	1114.00	Monoterpenol
30	21.38	0.04%	trans-Pinocarveol	1143.75	Monoterpenol
31	21.61	11.09%	Camphor	1147.55	Monoterpene Ketone
32	22.41	1.68%	Borneol	1168.71	Monoterpenol
33	22.82	0.44%	Terpinen-4-ol	1180.57	Monoterpenol
34	23.31	1.62%	alpha-Terpineol	1191.71	Monoterpenol
35	26.76	1.57%	Bornyl acetate	1288.29	Monoterpene Ester

 ESSENTIAL VALIDATION SERVICES | 747 SW 2<sup>ND</sup> AVE GAINESVILLE, FLORIDA 32601 | 317-361-5044



Rosemary (*Rosmarinus officinalis*)  
NF-RSMI-19-A

Number	RT	Area %	Compound Name	RI	Chemical Family
36	29.77	0.04%	alpha-Ylangene	1371.33	Monoterpene Ester
37	29.91	0.15%	alpha-Copaene	1379.00	Sesquiterpene
38	31.39	4.44%	beta-Caryophyllene	1427.14	Sesquiterpene
39	32.46	0.46%	alpha-Humulene	1461.43	Sesquiterpene
40	33.11	0.09%	gamma-Murolene	1478.86	Sesquiterpene
41	34.28	0.05%	gamma-Cadinene	1515.29	Sesquiterpene
42	34.52	0.12%	delta-Cadinene	1524.14	Sesquiterpene
43	36.42	0.18%	Caryophyllene oxide	1594.86	Sesquiterpene Ether

ESSENTIAL VALIDATION SERVICES | 747 SW 2ND AVE GAINESVILLE, FLORIDA 32601 | 317-361-5044

- This report is the digitally signed and will only be considered valid if the signature is intact.
- This report may not be published without the consent of Essential Validation Services.
- Chromatograph image may not show full run time